

# 125Khz EM4100 RFID Cabinet Lock

## EM-RFID-Lock-V2

### Specification:

- RFID card Type** : EM4100 or compatible card or keyfob
- Standby current** : < 25uA
- Operation power consumption** : <200mA
- Low voltage alarm** :below 4.5V (red indicator light and Buzzer)
- Read card distance**:~2-4 cm
- Door Open time** : < 4 second
- Battery power** : 4 Pcs x AAA alkaline batteries.
- Battery life**: > 12 months
- Operation Temperature** : -15°C to +65°C
- Humidity resistant** : **25-85%** RH
- Material** : Lock panel – Plastic case / Lock bolt---Zinc alloy
- External power port** : for external battery supply if internal power failure



### Full Package

- RFID lock body with latch x 1
- RFID Reader panel x 1
- EM4100 Master card x 1
- EM4100 user card x 2
- EM4100 user keyfob x 2
- External battery pack x 1
- User manual CD x 1

### Application

office cabinet ,filing cabinet , GYM locker , save box locker, supermarket locker and Sauna centre cabinet

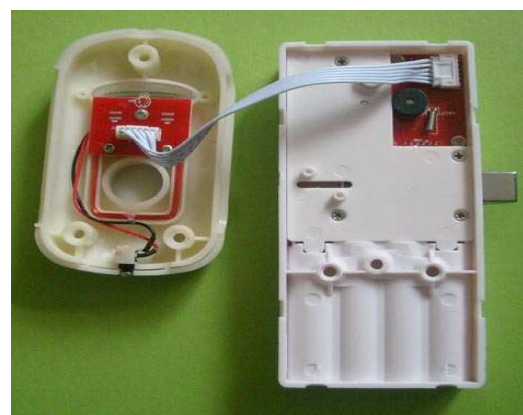
### Dimension

**Reader panel** : W62 X H110 X D15 (mm)

**Lock body** : W62 X H145 X D22 (mm)



Front Side View



Back Side View